



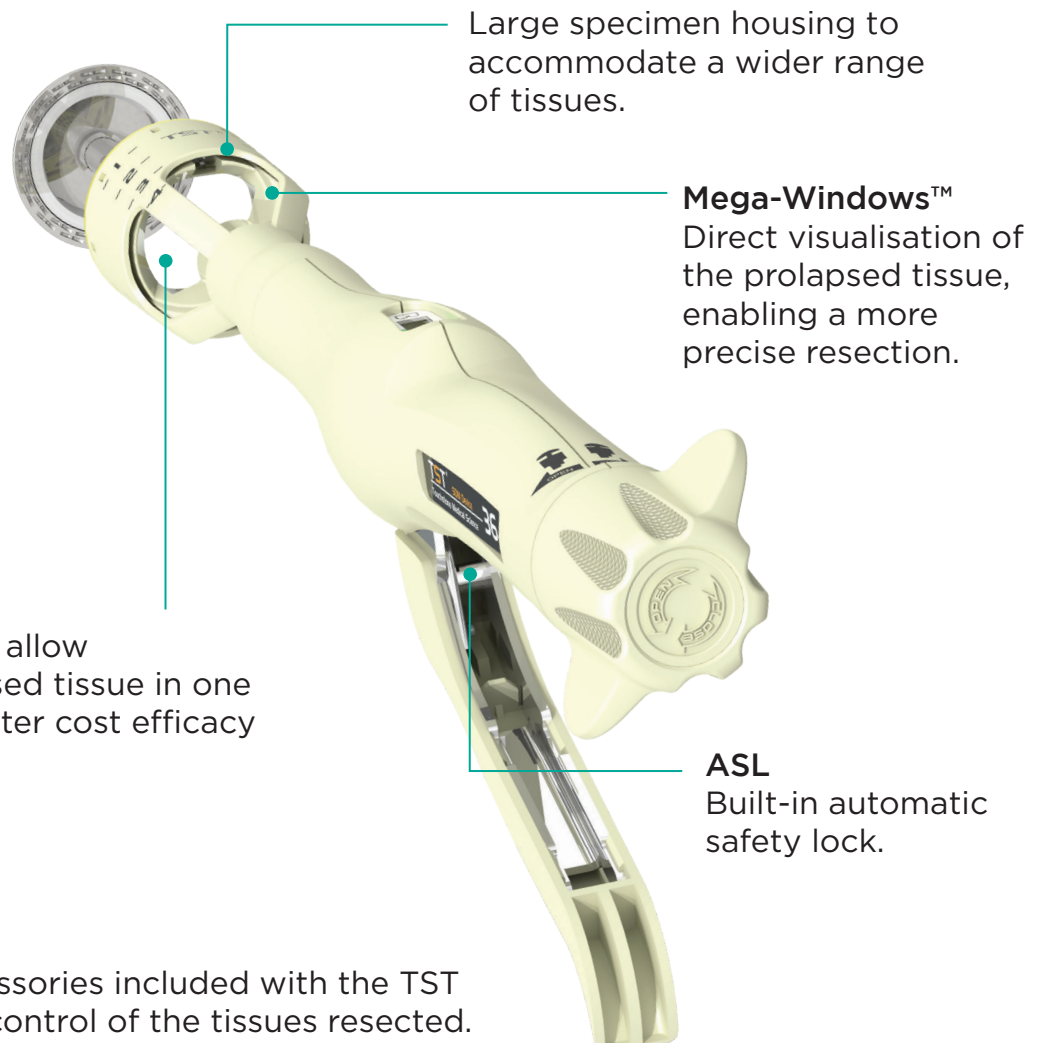
Surgical stapling

PPHpro to be upgraded to TST

Customer information

Tissue Selective Therapy (TST)

The first choice for the treatment of grade II-IV hemorrhoids, rectocele and rectal prolapse requiring partial or circumferential resection.



Barrier-Free™

Additional space to allow resection of prolapsed tissue in one firing, bringing greater cost efficacy to the procedure.

Selective sampling

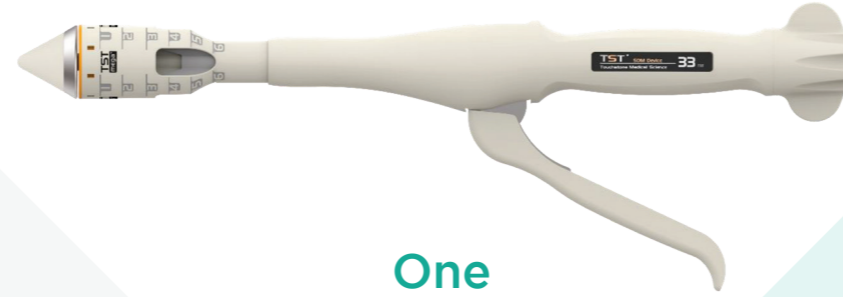
Wide range of accessories included with the TST to provide greater control of the tissues resected.



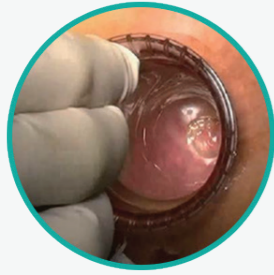
Segmented Purse-String

Two Procedures

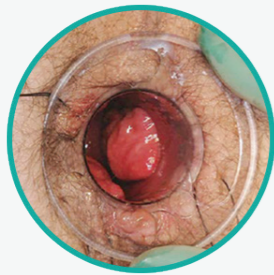
Circumferential Purse-String



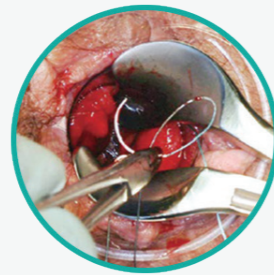
One Gun



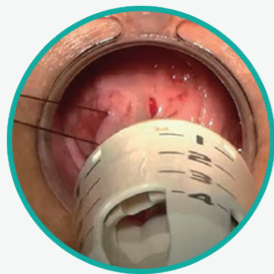
1. Dilatation of anus.



2. Insertion & fixation of an appropriate anoscope. (choose 1, 2 or 3 window)



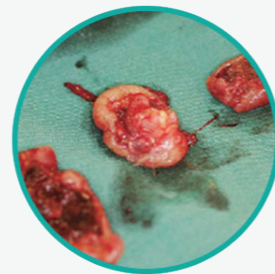
3. Segmented purse-string made.



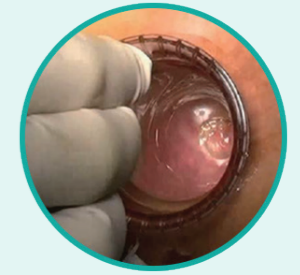
4. Split the suture to 2-3 strands and pull each strand into the traction hole separately with the suture threader.



5. Turn the adjusting knob clockwise until the red indicator moves as far to the back as possible without over straining, then fire.



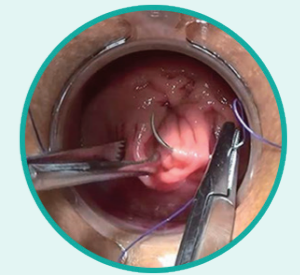
6. Check the specimen.



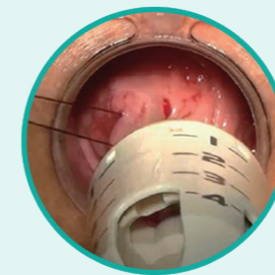
1. Dilatation of anus.



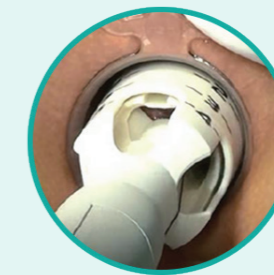
2. Insertion & fixation of anoscope.



3. Circumferential purse-string made.



4. Insertion of TST and tighten the suture on the centre rod.



5. Turn the adjusting knob clockwise until the red indicator moves as far to the back as possible without over straining, then fire.



6. Check the specimen.

Accessories of this procedure




TST33-S180


Accessories of this procedure



TST33-S180

Differences between the PPHpro and TST

Product	NHS supply chain	Anvil diameter	Staple quantity	Staple height	Closed staple height	Staple housing volume
 TST33-S180	Coming soon	33mm	32	4.0mm	0.75-1.5 mm	19ml

 PPHpro33	FGE390	33mm	32	4.0mm	0.75-1.5 mm	19ml
---	--------	------	----	-------	-------------	------

The transition from PPHpro to TST will occur naturally in the coming weeks. If you have any queries concerning this please do not hesitate to contact your local representative, or Lawmed directly at:

ADVANCING SURGICAL POSSIBILITIES

LAWMED Ltd.
 Unit 1, Walton Lodge, Bridge Street
 Walton On Thames, KT12 1BT
 United Kingdom

E: enquiries@lawmed.co.uk
 T: +44 (0)1932 260 838
 F: +44 (0)1932 260 849
www.lawmed.co.uk